

The Second City

STEWART HICKS

University of Illinois, Urbana-Champaign

ALLISON NEWMAYER

University of Illinois, Urbana-Champaign

"No mountains or high hills enable us to look over broad expanses of the earth's surface; and perforce we must come even to the margin of the Lake for such a survey of nature. The Lake is living water, ever in motion, and ever changing in color and in the form of its waves. In its every aspect it is a living thing, delighting man's eye and refreshing his spirit."

- Daniel Burnham, 1909 Chicago Plan

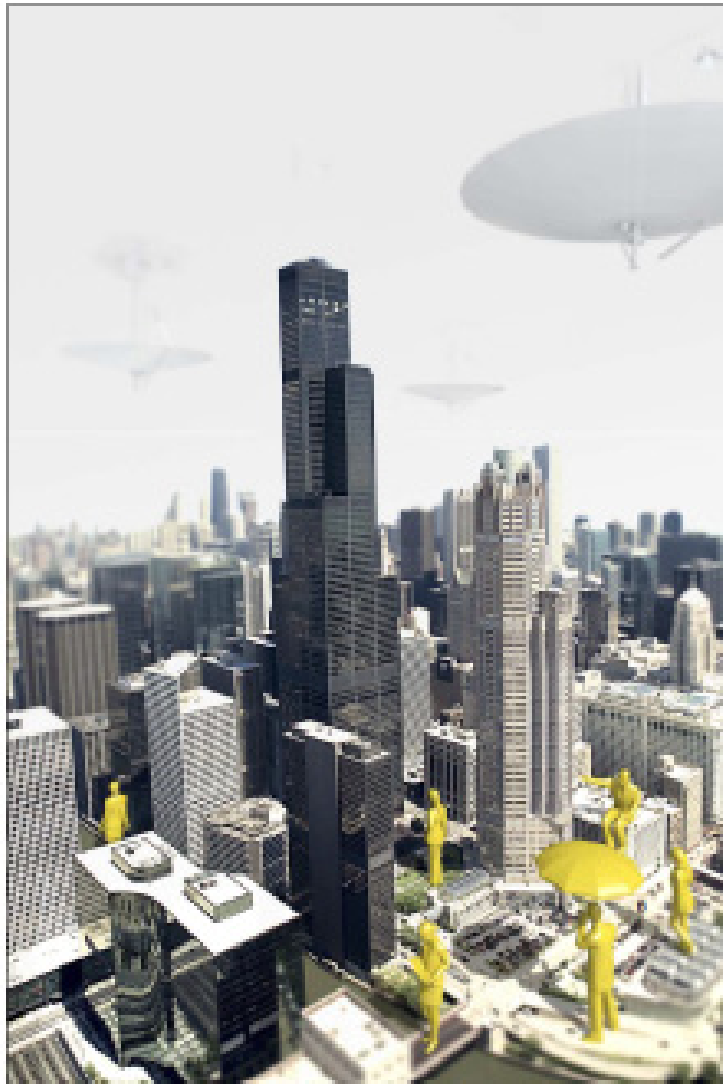
This is a speculative project that revives Chicago's McCormick Center with new life as a spectacular techno-natural landmark. Modeled on the National Gallery in Berlin, the building was constructed in the early 1970s as a replacement for the original that burned in spectacular Chicago fashion in 1967. As it sits, the 300,000 Center is too small for the program for which it was originally intended and its carcass lies at the foot of Lake Shore Drive both as an empty gateway to the city and an obstruction for the lake front. This project contends with the competing and overlaid desires for the building by creating a new tourist destination and scenario-planning infrastructure from the existing architecture.

On the roof of the Center, a 1:25 miniature replica of Chicago is constructed. A clear mound protects the model, provides space for artificial weather equipment and creates unexpected visual connections between both Chicagos. Within the mound, the model acts as a simulator for various future scenarios. Consequences of global warming, new construction, earthquakes, fires, asteroid impacts, tornados, blizzards etc. are tested repeatedly while appropriate action plans are calculated. On the exterior, the mound presents a new urban landmark along Lake Shore Drive, provides space for new lake shore activities, and redirects views through and around the existing building.

The desire and plan to secure the waterfront for public access and parkland is directly attributable to Daniel Burnham and the 1909 Chicago Plan. At the time, nature and the city were conceived as separate, complementary entities. The opportunity to get away from the city and into nature was believed to cleanse the spirit and the attempts to "aerate" the urban fabric were to let it "breathe." Nature injections within the vast artificial construction were thought to cure urban ills. This proposal updates this urban operation manual with a new unnatural natural landmark. A 1/25th scale snow-globe enhancement surgery for the city.

The story of the project is primarily told through the visitor information documents. These include maps, promotional material and merchandise catalogs. It is a National Geographic exploration of an urban nature, archeology and anthropology.





THE STORY.

The following is the story of how Second Second City developed. Our rich history is a testament to the quality of experience you will have on your visit. We weren't, in fact, always a fun place to bring your family. That's right, the whole phenomenon began as a scientific experiment. Since those days, we have become the largest tourist destination in Chicago and all of the Midwest. We now have more visitors per year than the entirety of attractions in the full-sized Chicago combined. We also hold the illustrious title of being the **WORLD'S LARGEST MINATURE.**

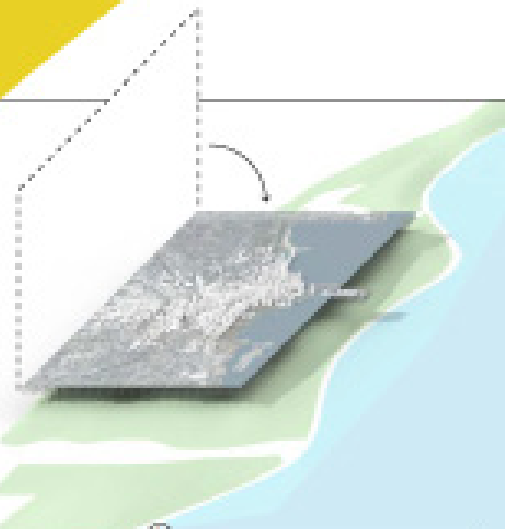
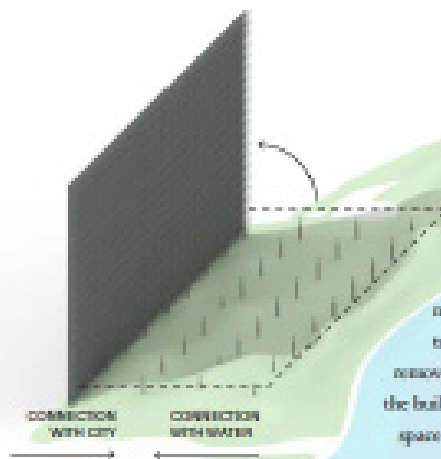
These people are full-sized in the miniature city. They look like they are having fun in the accelerated alternative future scenario zone.



Second Updown Umbrella
 Caught in a literal downpour while visiting the miniature, protect yourself with our signature reinforced umbrella. Polyester and metal.
99-999-999

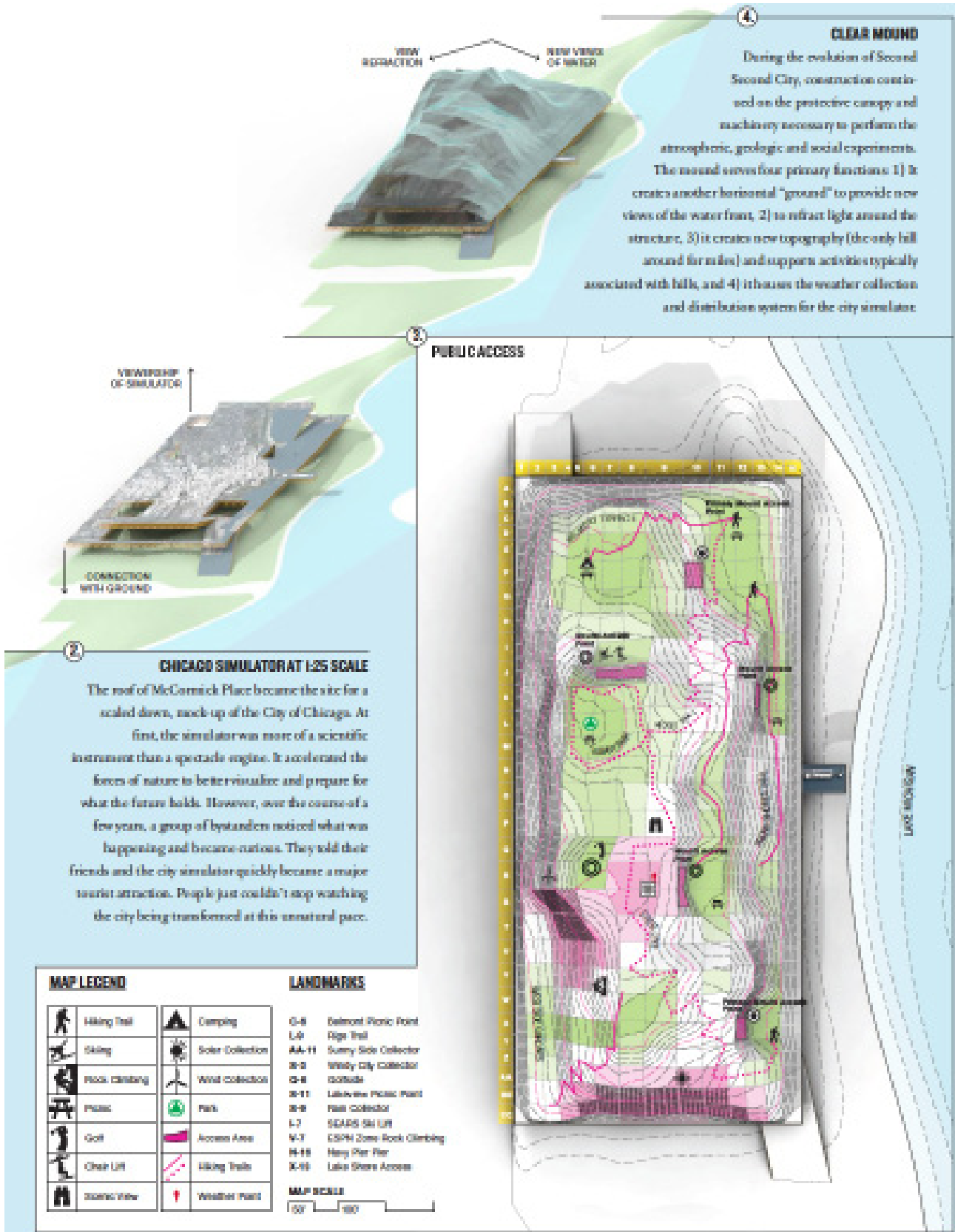
Comes in the following colors:

Business Sunset	Gold Coast
Lower Market	Thunderbox
Edgewater	Galvani Green



1. STITCH THE LAND TOGETHER

In its previous state, McCormick Place presented a barrier to the waterfront. This was in contrast to the formal expression of the building and the extreme horizontally extending planes. The city repurposed the structure to truly behave as a series of multiplied horizontal surfaces and to provide a new infrastructure for connecting with nature. After the vertical barriers were removed, new land forms buried the existing podium that separated the building from its surroundings. The landscape flows through the space of the structure, providing direct access along the waterfront.



THE SIMULATION.

The simulator is an urban nature accelerator and intensifier. It collects weather and other phenomena from the outside, focuses it and channels it inward. Inside, stadium style seating allows viewers to witness the future scenario from a safe distance. Since Burnham had been the source of inspiration for Second Second City, the section of the mound was determined by repositing the 1909 Burnham Plan for Chicago. By rotating the plan to become the section of the mound, the streets, parks and other features are given new meaning. The shape of the Chicago River in plan is now the shape of mountain in section.



2 Second Wicker Park Basket
Carry all of your goodies to your final dining destination with this convenient and stylish basket.
Wood and cane weaving
25230, \$55



2 Second Back of the 'Nards Backpack
Carry all of your important gear with this handy and comfortable pack.
Produced by Hoff-Hart specialty for us!
Canvas
25400, \$55



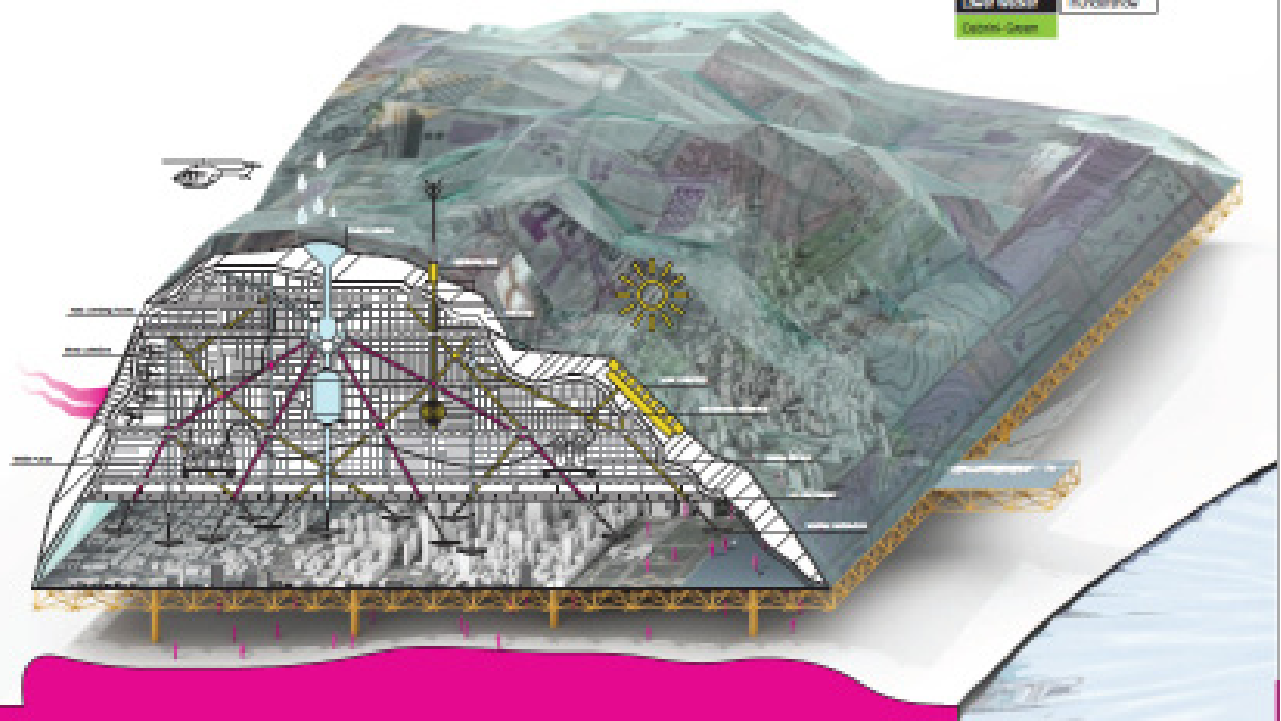
2 Second Lakeview Binoculars
Watch the living world as the waves gently caress the shores of Chicago.
Metal and Glass
25400, \$75



2 Second City Ice Skates
Don't be caught without your skates with the Second Lake Michigan blades cut.
All sizes and female sizes
24200, \$85

Comes in the following colors:

Burnham Sunset	Gold Coast
Lower Wicker	Thundernow
Deloitte-Green	



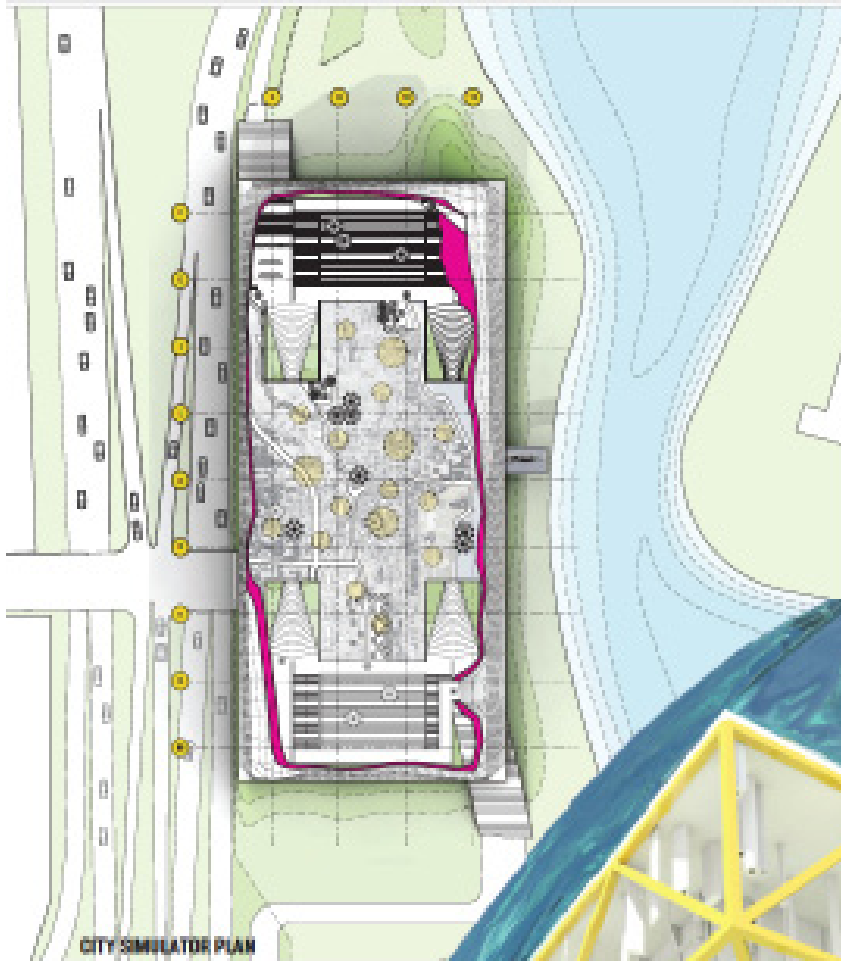
BURNHAM LATERAL PLAN



BURNHAM PLAN CHOPPED



BURNHAM SECTION MOUND



THE INFRASTRUCTURE.

"We had so much fun at Second Second City. No trip to Illinois is complete without visiting the other Chicago. The crystal mound always looks different as it sparkles in the sunlight. And the kids just loved watching the experiments on the model city. We even got to see how Chicagoans might survive a famine..."

-Anonymous Visitor testimony



© Second Second City Camera
 Capture all of the important moments
 of your trip with this digital camera. Comes
 in both 3 and 6 megapixels for a high
 resolution account of your visit.

05495L 1/05

